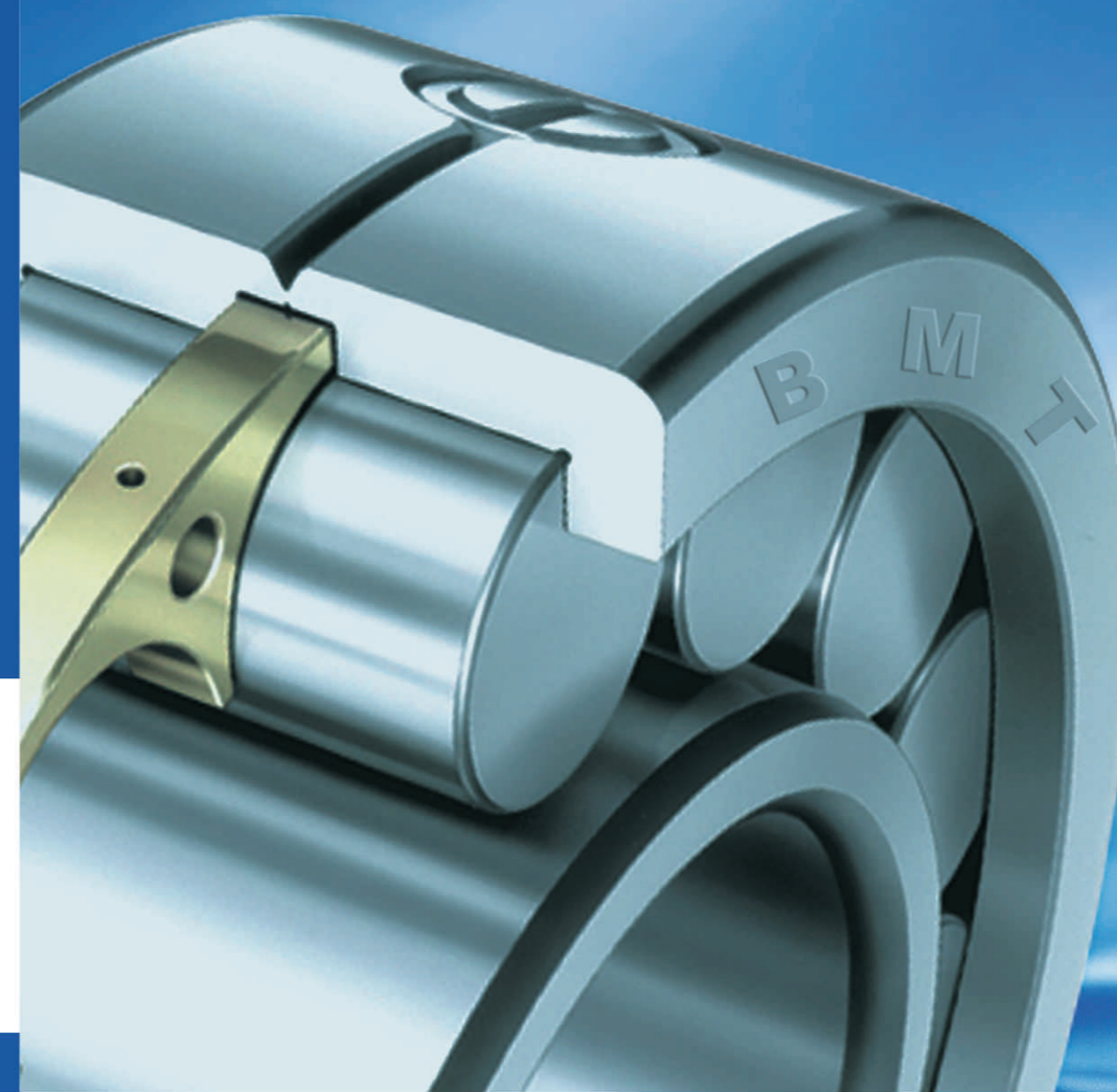




DEMY (D&M) BEARINGS CO.,LTD.
NINGBO GIANT BEARINGS MANUFACTURING CO.,LTD.



Off.Add: B.515-516,Liyuanshangdu,No.39,Lane158,Huancheng West Road,Ningbo, China
Tel:86-574-8710 3636 2787 9868 8710 3638
Fax:86-574-8710 3637 2787 9869
Mobile: 86- 13905846672
Fac.Add: No.183,Longfeng, West of Zhangting Industrial Zone,Yuyao,Ningbo,China
Tel:86-574-6299 6288 6299 6299 Fax:86-574-6299 6255 6299 6266
E-mail: sales@dem-y-bearing.com
sales@bmt-bearings.com
tmbearing@hotmail.com (msn)
Skype:dylan_min6672
Http:// www.demy-bearing.com
www.China-bmt.com



CONTENTS

Deep Groove Ball Bearings	02
Angular Contact Ball Bearings	04
Self-Aligning Ball Bearings	06
Thrust Ball Bearings	07
Tapered Roller Bearings	08
Cylindrical Roller Bearing	10
Spherical Roller Bearings	12
Spherical Thrust Roller Bearings	13
Needle Roller Bearings	14
Track Rollers	15
Slewing Bearing	16
Automobile Bearings	17
Agricultural Bearings	20
Bearing Units	21
Ceramic Bearings	22
Stainless Steel Bearings	23
Rod-end & Linear Bearings	24
Special Bearings	25
Balls & Rollers	25

DEMY (D&M) BEARINGS CO.,LTD. is one of leading ball & roller bearing manufacturers & exporters in China. It is specialized in research and development for various kinds of high precision non-noise, long-life bearings. We can produce more than 12000 specifications of general and special bearings with 9 types and 5 precision classes according to international standard, national standard and customer requirements, whose ID ranges are from 5 mm to 6300 mm. Meanwhile, we produce precision ball screws, C. V. Joints, Slewing bearings and etc.

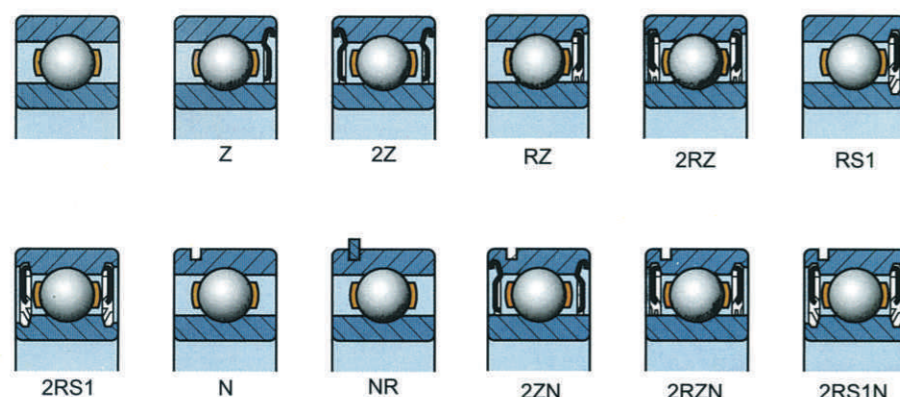
We have been supplying our products for more than 60 varies of industries, including railway, automobile, metallurgical, petro-chemical, military and other industries. products have been found a steady market in North & South America, South-east Asia, Europe & some other Countries & districts.

The company is developing to ward series of products with high grade, high precision and advanced technologies to create a global OEM and after-sale service system, according to ISO9001:2000 Quality certificate.

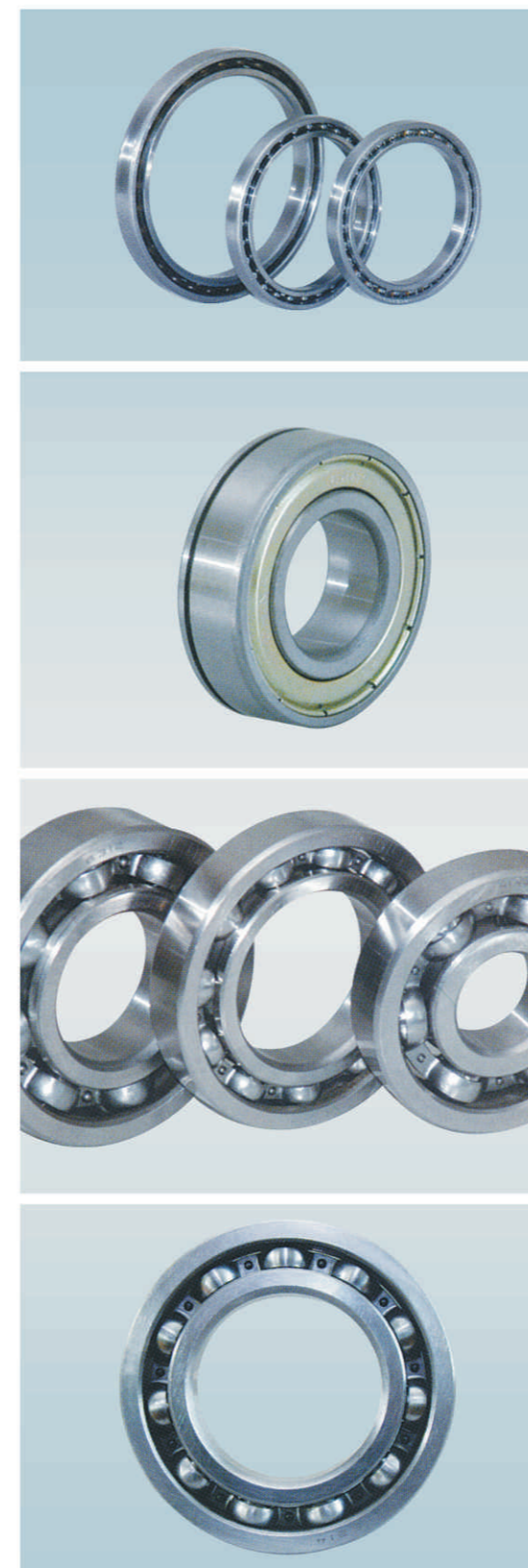
DEMY (D&M) Bearings will adhere a long term principle "Quality first, Credit first & Service first" to welcome customers both at home & abroad.

Deep Groove Ball Bearings

Deep groove ball bearings mainly take radial load as well as take moderate axial load. With less coefficient of friction, high limiting speed, large size range and variations of structure, they are suitable for precision instruments, low noise motors, automobiles, motorcycles, and other common machinery, as a widely used type of bearings in machinery industry.



Deep Groove Ball Bearings



Characteristics	Variant structure		
	Z1	2RZ	2RS1
Low friction torque	■	■	▲
High speed	■	■	▲
Sealed grease lubrication	▲	■	●
Dustproof	▲	■	●
Waterproof	×	▲	■

● Excellent ■ Good ▲ Fair × Poor

Series	Bore Diameter	Variant structure
61800	10 ~ 1200	Z, 2Z, RZ, 2RZ
61900	10 ~ 1000	Z, 2Z, RZ, 2RZ, N, NR, ZN, RZN
16000	10 ~ 1000	
6000	10 ~ 1000	Z, 2Z, RZ, 2RZ, RS1, 2RS1, N, NR, ZN, RZN
6200	10 ~ 1400	Z, 2Z, RZ, 2RZ, RS1, 2RS1, N, NR, ZN, RZN
6300	10 ~ 1200	Z, 2Z, RZ, 2RZ, RS1, 2RS1, N, NR, ZN, RZN
6400	10 ~ 1200	N, NR
Miniature bearings	1 ~ 10	2Z, RS, 2RS, F60000



Angular Contact Ball Bearings

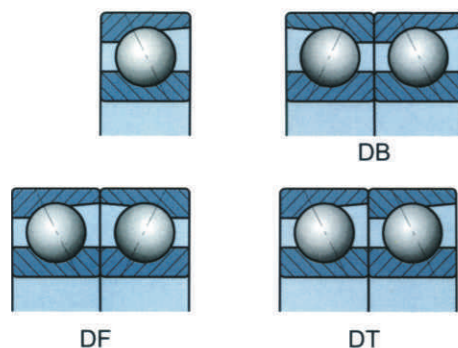


Angular contact ball bearings are able to support radial load and axial load. As single row angular contact ball bearings can only support axial load in single direction, matched bearing mounting is often adopted to them. As matched pairs of bearings, preload for them is more convenient.

Retainers are made of brass, synthetic resins or others subject to individual bearing features and application conditions.

Single Row/Duplex Angular Contact Ball Bearings

	Matching arrangement		
	Back to back (DB)	Face to face (DF)	Tandem (DT)
	Load direction	Load direction	Load direction
Rigidity	Great	Medium	Small



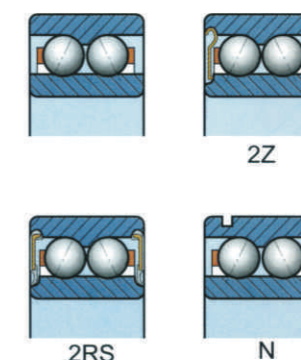
Series		Bore Diameter
Contact angle 15°	Contact angle 25°	
7000C, AC	7200B	10 ~ 600
7200C, AC	7300B	10 ~ 600
7300C, AC		10 ~ 600

Angular Contact Ball Bearings



Double Row Angular Contact Ball Bearings

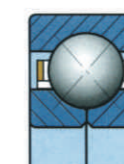
Series	Bore Diameter	Variant structure
3200A	10 ~ 600	2RS, 2Z, N
3300A	10 ~ 600	2RS, 2Z, N
3200	10 ~ 600	2RS, 2Z, N
3300	10 ~ 600	2RS, 2Z, N



Double row angular contact ball bearings are a form of back-to-back pairs of single row angular contact ball bearings, which support axial load in both directions as well as support radial load.

Four Point Contact Ball Bearings

Series	Bore Diameter
QJ 200	10 ~ 600
QJ 300	10 ~ 600
QJF 100	100 ~ 600
QJF 200	100 ~ 600



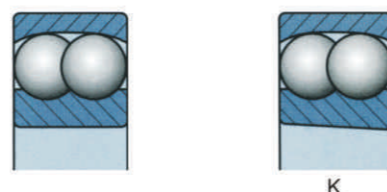
With two pieces inner ring, this type bearing can take axial load in both directions.

Note: The bearing can be matched in any number and arrangement.

Self-aligning Ball Bearings



With two structures of bore cylindrical or tapered and retainers made of steel sheet or synthetic resins, the bearings are characteristic of their spherically formed outer ring raceways allowing for misalignment within 3° deflection between inner ring and outer ring, so as to compensate concentricity and deflection errors.



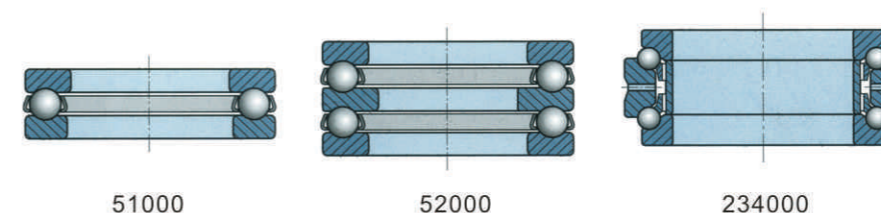
Series		Bore Diameter		Variant structure	
1200	1200K	10 ~ 120	10 ~ 120	2RS	+H200
1300	1300K	10 ~ 110	10 ~ 110	2RS	+H300
2200	2200K	10 ~ 110	10 ~ 110	2RS	+H300
2300	2300K	10 ~ 110	10 ~ 110	2RS	+H2300

Thrust Ball Bearings



This type of bearings is separable, which can only carry axial load. The single direction bearings of them can only carry axial load in one direction, while the double can carry alternating axial load in either direction. Before using they have to be preloaded. The thrust ball bearing are used in lathe centers, automobile clutches, reducers and so on. The double direction angular contact thrust ball bearings are suitable for machine tool spindles, while the single are used to support ball screws.

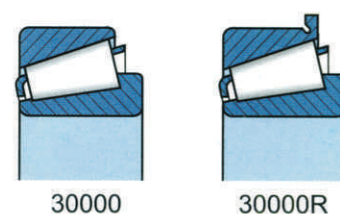
Series	Bore Diameter
51100	10 ~ 800
51200	10 ~ 1000
51300	10 ~ 1000
51400	10 ~ 1200
52200	10 ~ 1000
52300	10 ~ 1200
F-2900	10 ~ 110
234400BMI	25 ~ 260
234700BMI	25 ~ 260
234900BMI	25 ~ 280
7602000TN	10 ~ 100
7603000TN	10 ~ 100



Tapered Roller Bearings

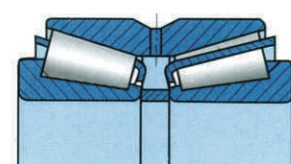


Tapered roller bearings are generally used to support combined load mainly consisting of radial load. Their cups are separable for easy assembling. During mounting and using, radial clearance and axial clearance can be adjusted and preloaded mounting can be made.



30000

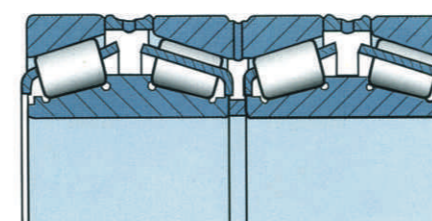
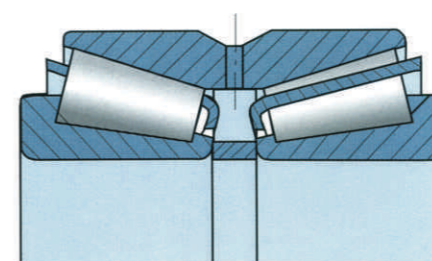
30000R



350000

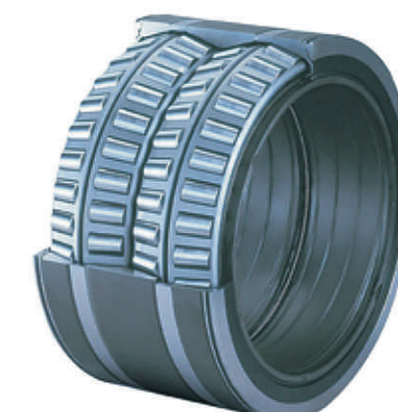
Metric Series	Bore Diameter
32900	10 ~ 800
32000X	10 ~ 700
30200	10 ~ 600
30300	10 ~ 600
32200	10 ~ 600
32300	30 ~ 500
33000	10 ~ 600
33000	10 ~ 600
33200	10 ~ 700
31300	10 ~ 700
Inch Series	Outside Diameter
30000R	≤800
350000	≤800

Tapered Roller Bearings



Metric Series	Bore Diameter
352000	160 ~ 1400
352200	160 ~ 1200
352900	180 ~ 1200
352000	180 ~ 1200
350600	180 ~ 1000
351900	180 ~ 1400
351000	180 ~ 1200

Inch Series	Outside Diameter
381000	200 ~ 1200
382000	200 ~ 1400
381100	180 ~ 1400
382900	180 ~ 1200
380600	200 ~ 1200
381900	200 ~ 1200



Cylindrical Roller Bearings

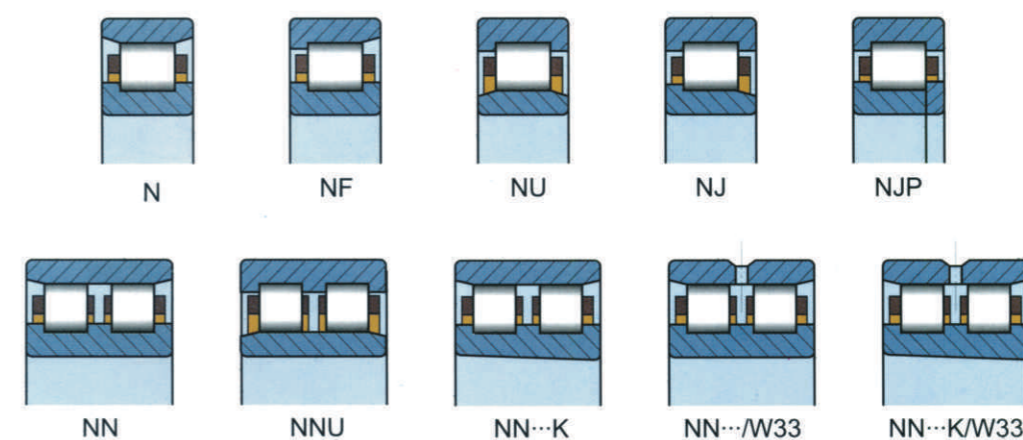
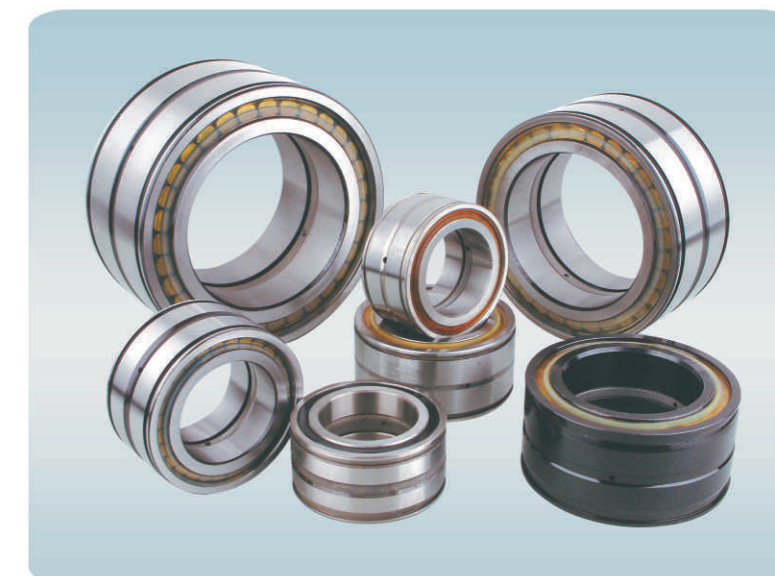
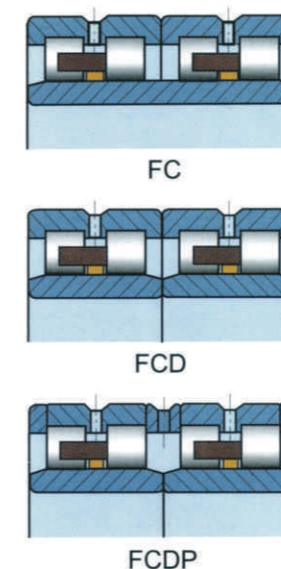
This type of bearings is separable. As their rollers linearly come into contact with inner ring and outer ring with less coefficient of friction, these bearings have very good capacity of radial load, suitable for electric motors, automobiles, transmission shafts, gear shafts and so on. Double row cylindrical roller bearings are good at the spindles of machine tools.

Series	Bore Diameter	Variant structure
220E	10 ~ 1200	N, NF, NJ, NU, NUP
300E	10 ~ 1200	N, NF, NJ, NU, NUP
400E	260 ~ 800	N, NF, NJ, NU, NUP
100	10 ~ 1000	N, NF, NJ, NU, NUP
2200E	10 ~ 1000	N, NF, NJ, NU, NUP
2300E	10 ~ 1200	N, NF, NJ, NU, NUP
NN 3000	30 ~ 1200	K, /W33, K/W33
NNU4900	100 ~ 1200	K, /W33, K/W33



Cylindrical Roller Bearings

Series	Bore Diameter (mm)
FC	120~600
FCD	200~800
FCDP	300~1000

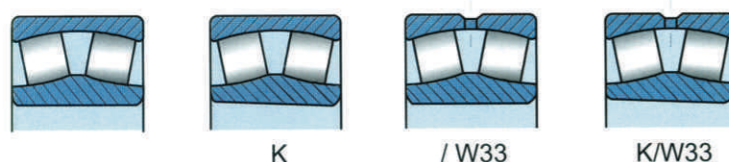


Spherical Roller Bearings

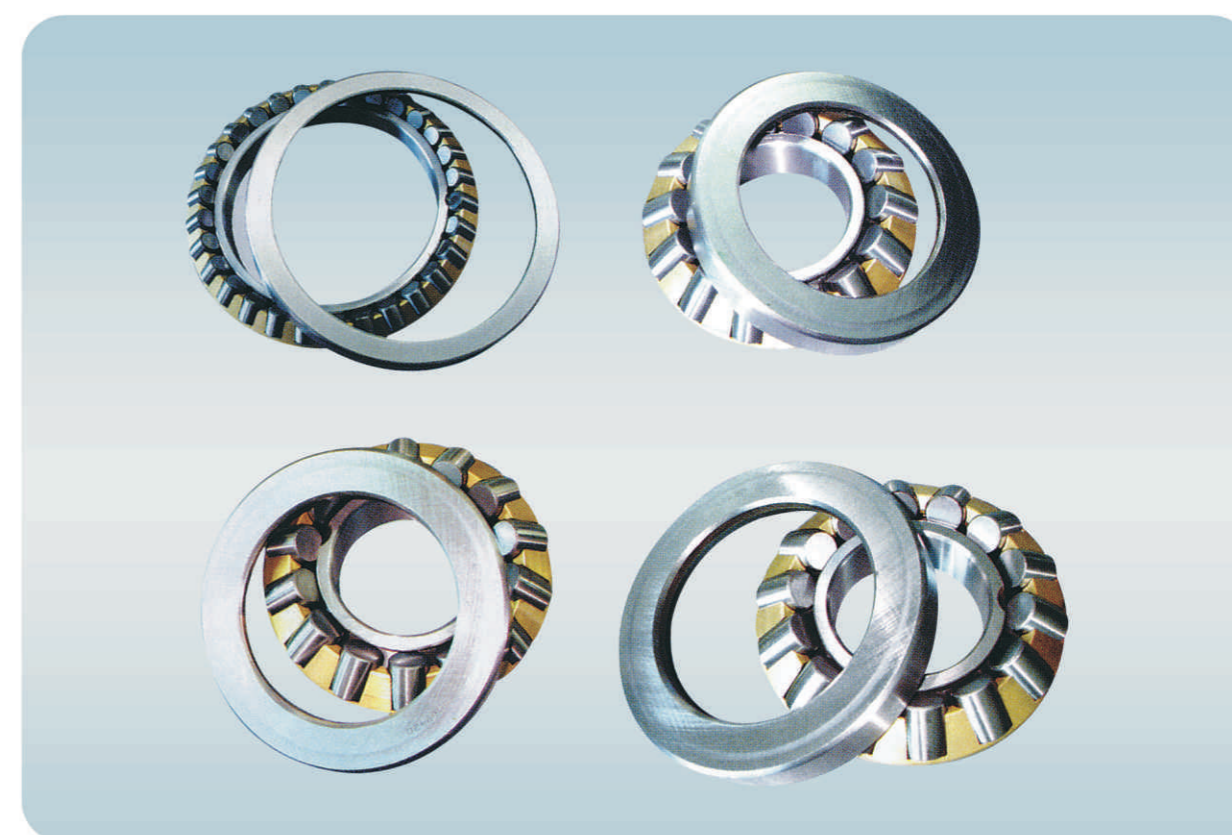


With the same center as the bearing, the spherically formed outer ring raceway can make selfalignment. Their rolling elements linearly come into contact with the raceways of inner ring and outer ring. The bearings can take great radial load, suitable for heavy machinery used in mining, metallurgical, paper-making and instructing, etc., industry

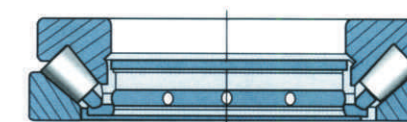
Series	Bore Diameter	Variant structure
22200	10 ~ 1400	K, /W33, K/W33
22300	10 ~ 1200	K, /W33, K/W33
23100	10 ~ 1400	K, /W33, K/W33
23200	10 ~ 1400	K, /W33, K/W33
23000	10 ~ 1600	K, /W33, K/W33
24000	30 ~ 1400	K, /W33, K/W33
24100	10 ~ 1400	K, /W33, K/W33
21300	10 ~ 800	K, /W33, K/W33



Spherical Thrust Roller Bearings



The rollers of these bearings are of spherical shape, and the spherical raceway surface of the housing washer is selfaligned. These bearings are featured by the extremely big axial load carrying capacity and meanwhile they can also carry certain radial load. Oil lubrication is commonly used while working. Applications, of these bearings can be found in hydroelectric generators, vertical motors, propeller axle of vessels, tower cranes and squeezing presses.



Series	Bore Diameter
29200	100 ~ 1200
29300	120 ~ 1200
29400	140 ~ 1000
9069200	100 ~ 1200
9069300	120 ~ 1200
9069400	140 ~ 1000

Needle Roller Bearings



Machined Type Needle Bearing
Series:NA49, NA59, NA69, NKI, NKIS, BRI, TAFI, NAO, NA...2RS, etc



Machined Type Needle Bearing Without Inner Ring
Series:RNA49, RNA59, RNA69, NK, NKS, TAF, RNAO, RNA, HJ, BR, NCS, MR...2RS, etc.

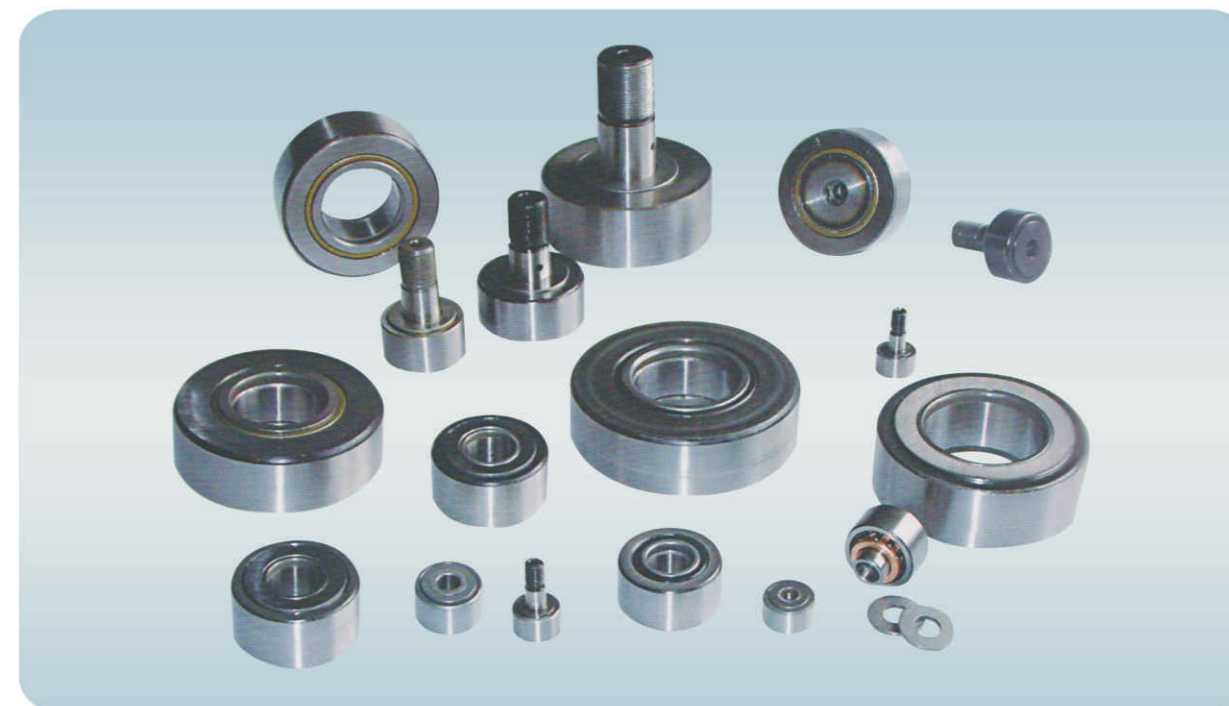


Drawn Cup Needle Bearing
Series:HK, BK, TA, TLA, F, FH, SN, MF, MFH, MFY, SCE, BCE, SCH, BCH, BA, B, BH, M, MH, HK...OH, HK...2RS, etc

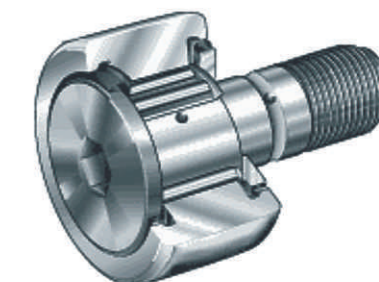
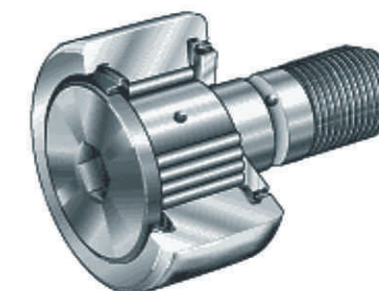


Drawn Cup Needle Roller Clutches
Series:HF, HFL, RC, RCB, FC, FCB, etc

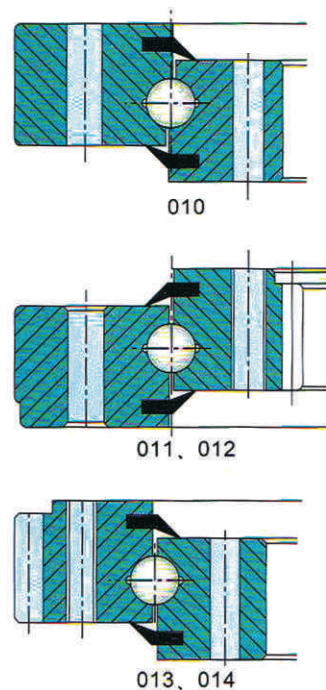
Track Rollers



Series	Structure description
RSTO	Yoke type track roller without axial guidance,without inner ring,outer ring without ribs
RNA22...2RS	Yoke type track roller without axial guidance,without inner ring,lip seals on both sides
NATR	Yoke type track roller without axial guidance by washers,with inner ring,gap seals on both sides
NATR...PP	Yoke type track roller NATR,lip seals on both sides
NATV	Yoke type track roller,axial guidance by washers,full complement needle roller set,with inner ring,gap seals on both sides
NATV...PP	Yoke type track roller NATV,lip seals on both sides
NUTR	Yoke type track roller with axial guidance by rolling elements,full complement cylindrical roller set,with inner ring,labyrinth seals on both sides
KR	Curve roller radically guided by retaininig edge and ring
KR...PP	Curve roller KR,lip seals on both sides
KRE	Curve roller with eccentric sleeve
KRE...PP	Curve roller KR with eccentric collar,lip seals on both sides
KRV	Curve roller radically guided by the retaininig edge and ring,full complement
KRV...PP	Curve roller ,axial guided by rib and washer,full complement needle roller set,with lip seals on both sides
KRVE	Curve roller with eccentric sleeve,full complement
KRVE...PP	Curve rollerwith eccentric sleeve and retaining sleeve,full complement
NUKR	Curve roller with axial guidance by rolling elements,full complement cylindrical roller set,labyrinth seals on both sides
NUKRE	Curve roller NUKR, with eccentric collar
CR	Curve roller ,inch series

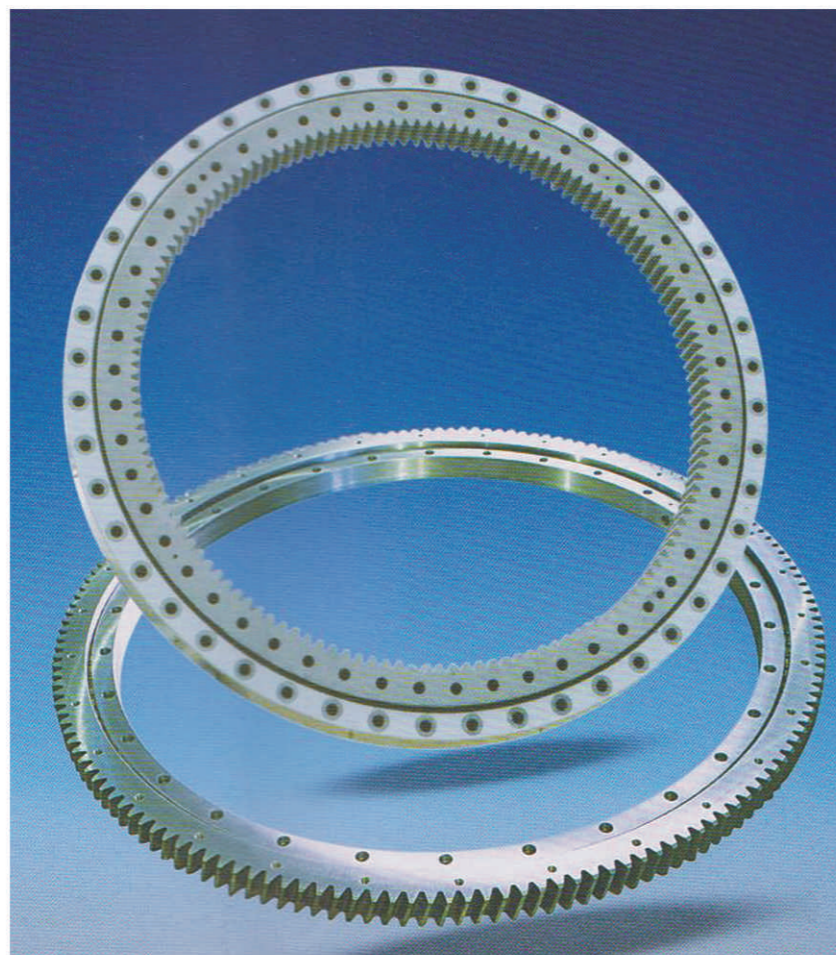


Slewing Bearings



Single row four point contact ball slewing bearing can be separated by inner gear, outer gear, cylindrical roller slewing can be separated by (single row, double rows, three rows).

This kind of bearing have the features of high rigid and reliable running and apply for mining, metallurgy, harbor and petroleum segments.



Series	Center of Rotation
010	500 ~ 1800
010/012	500 ~ 1800
013/014	500 ~ 1800
110	500 ~ 1800
111/002	500 ~ 1800
113/114	500 ~ 1800
130	500 ~ 1800

Automobile Bearings

一、Auto Wheel Hub Bearing & Hub Units



二、Air-condition Bearing



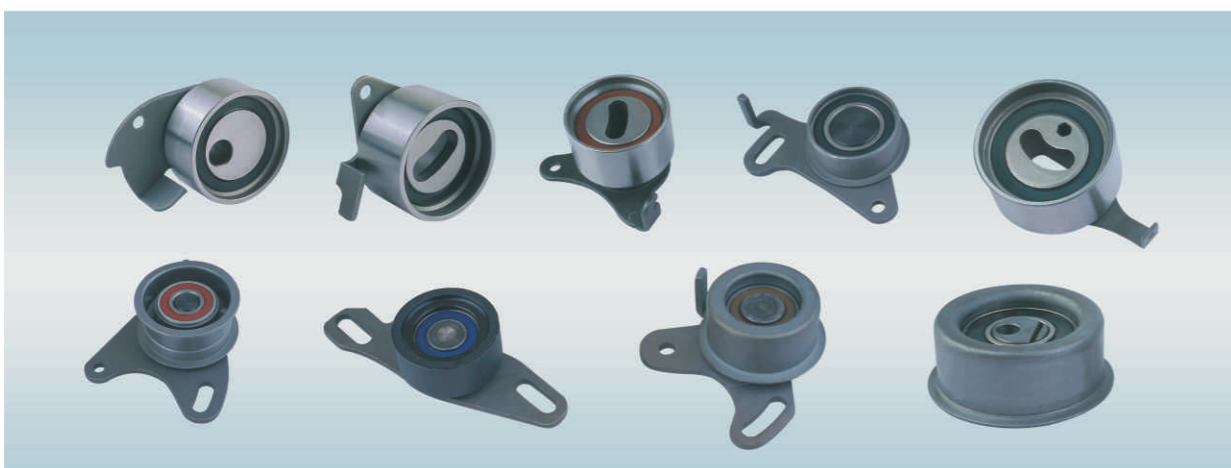
Bearing Code	Bore Diameter
	20~55mm
	Variant structure
	Seal Type A
	Seal Type B
	Seal Type C
	Seal Type D
	Seal Type E
	Seal Type S

Automobile Bearings

三、Clutch Release Bearing

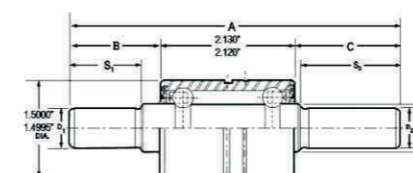


四、Tensioner

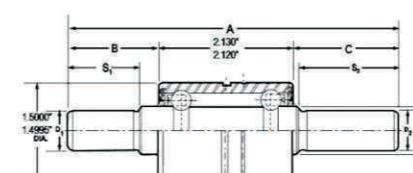


Automobile Bearings

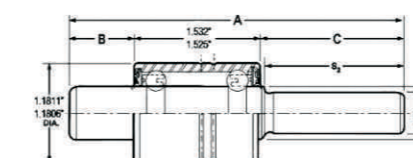
五、Water Pump Bearing



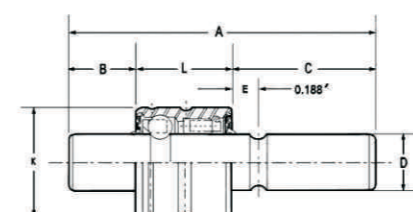
WNK SERIES



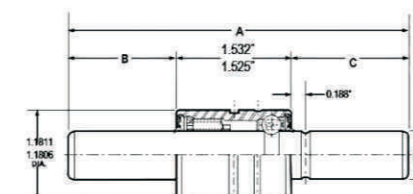
WK SERIES



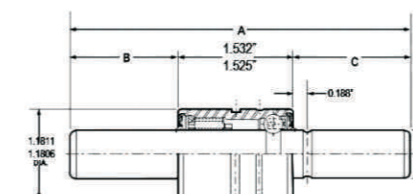
WNS SERIES



WS SERIES



WN SERIES



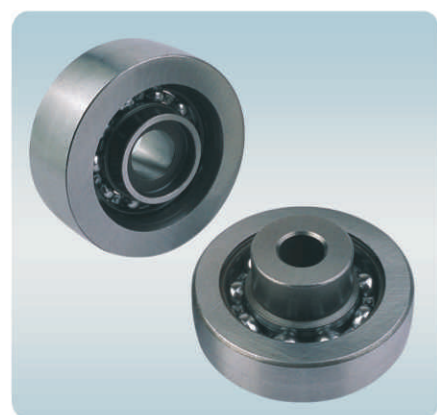
W SERIES



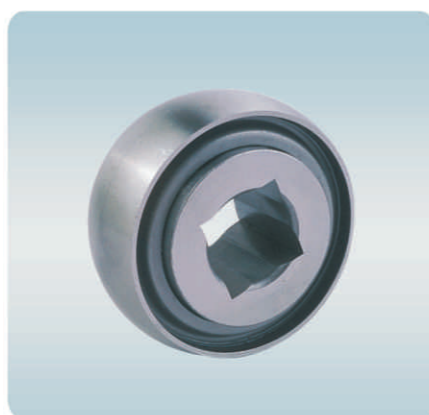
Agricultural Bearings



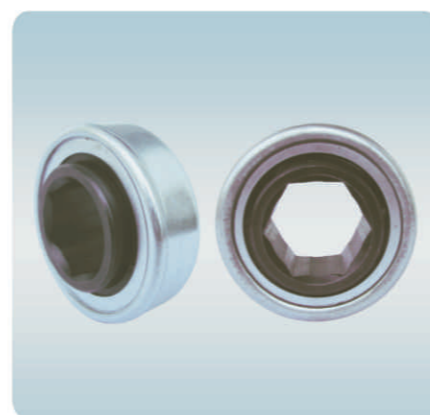
205 SERIES 206 SERIES 207 SERIES 208 SERIES
 209 SERIES 210 SERIES 211 SERIES 214 SERIES
 WIR SERIES



Agricultural Bearing with Circular Core

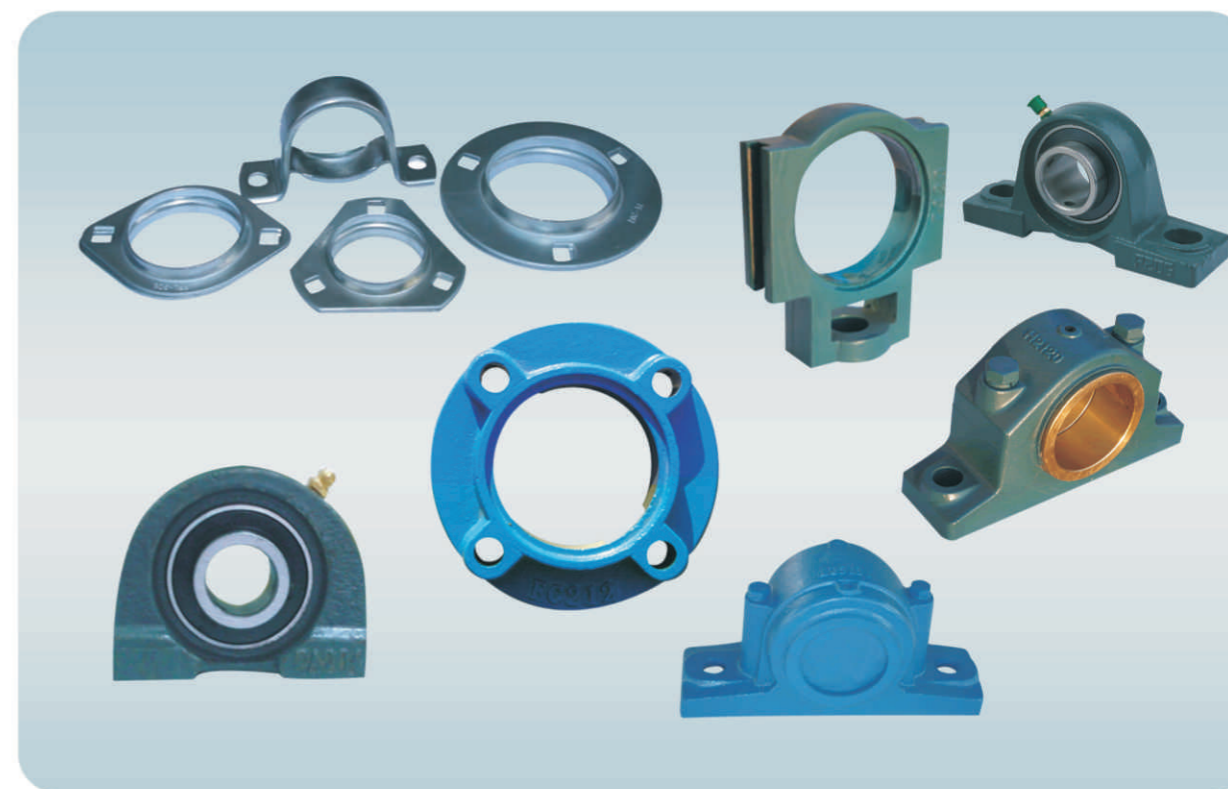


Agricultural Bearing with Quadrilateral Core



Agricultural Bearing with Hex Core

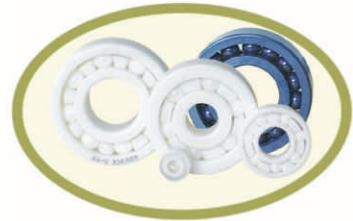
Bearing Units



Series	Series
UCP200 series	SBPFL200 series
UCP300 series	SBPF200 series
UCFL200 series	H2 00 series
UCFL300 series	H4 00 series
UCT200 series	H000 series
UCT300 series	SD 500 series
UCFC200 series	SD 600 series
UCPA200 series	SD 3000 series
UCFB200 series	SD 3100 series
UCFS300 series	SN 200 series
SN 3000 series	SN 300 series
SN 3100 series	SN 500 series
1500 series	SN 600 series
1600 series	



Ceramic Bearings



Deep groove ball bearings



Angular contact ball bearings



Self-aligning ball bearings



Thrust ball bearings



Spherical bearings

Full ceramic bearing has perfect propriety such like suitable for low and high temperatures, high load capacity, corrosion resistance, nonmagnetic insulated and self lubrication. Thus it suit for the specific applications which are not available for bearing steel and hybrid construction ceramic ball bearing materials.

Properties comparison of ceramic material

Properties	Unit	ZrO2	Si3N4	SiC	99Al2O3
Color		White	Gray & Black	Black	Ivory
P Density	g/cm ³	6-6.05	3.22-3.25	3.15-3.2	3.85-3.92
HV Hardness	Kg/mm	1,250	1,600	2,450	1,800
Toughness	MN/m	7.0	6.0	2.5	3.0
Bending Strength	Kgf/cm ²	100-120	80-100	40-50	30-40
Heat Impact	°C	280	900	400	200
α Coef. of expansion	X10 ⁻⁶ /°C	9.0	3.5	4.2	7.0
Max usage temperature	ΔT, °C	800	1,200	1,500	1,600
Corrosion resistance (acid & alkali)		Good	Good	Excellent	Excellent
Thermal conductivity	W/mk	3.0	29	120	23
Fatigue life		80X	100X	50X	40X
Magnetism		Non	Non	Non	Non
Insulation		Insulator	Insulator	Insulator	Insulator
Indentation strength	Mpa	2000	3500	2250-3000	2800-3500
Impact strength	MPa.m-3/2	11	7	4-5	2-4
Weber modulus	Gpa	>15	>15	>6	>7
Modulus of elasticity	Gpa	210	320	410	407
Poisson ratio		0.3	0.26	0.16	0.2
Resistivity		>10 ¹⁰	>10 ¹⁴	100-2	>10 ¹⁴ -10 ¹⁵
Ω Specific resistivity	mm ² /m	1015	1018		
Specific heat	J/KgK	400	800		
NO. of stress circle		50x106	50x106		
Destroy model		Peel off/Brnak	Peel off		
Dimension stability		Good	Good	Good	Good

Stainless Steel Bearings



Deep groove ball stainless bearings



Self-aligning ball stainless bearings



Angular contact ball stainless bearings

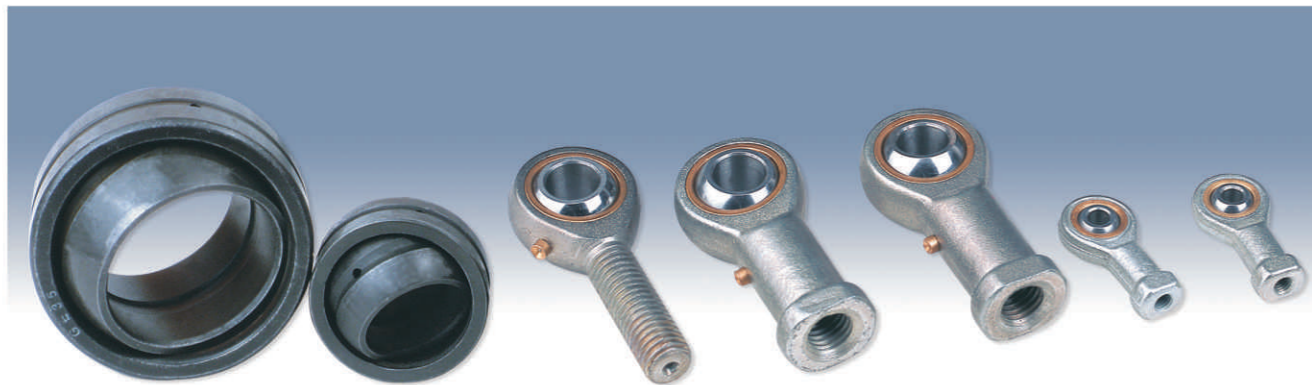


Thrust ball stainless bearings

The high performance stainless steel bearings can provides not only with the cleanliness and corrosion resistance characteristic also with the high accuracy and excellent wear resistance compare to the high carbon chrome steel bearings. The rings and balls are made of the material as a standard structure of stainless steel bearing, The rings and balls are made of the material of AISI440C(9Cr18Mo or 9Cr18), the cage and the framework of seal adoption the AI304 or AI316, production accuracy could reach ISO standard ABEC-1 and above, and the vibration level reach Z1

Parts	Materials
Rings	SUS440C, SUS440B, SUS304, SUS316
Balls	SUS440C, SUS440C, SUS304, SUS316
Retainer	SUS304, SUS316, Phenolic resin tube, PA66
RS	SUS304, SUS316, Butanenitrile nitrile rubber
ZZ	SUS304, SUS316

Rod-end & Linear Bearings



GF, SAB F/K, SIB F/K, NOS, JF, CF-T, CM-Y, SIHR, SI, SA, SIGEW, SIR, GK, PO SB, POSA, POS, PHSB, PHSA, PHS, GE..C, GE..BK, GEG, GE series

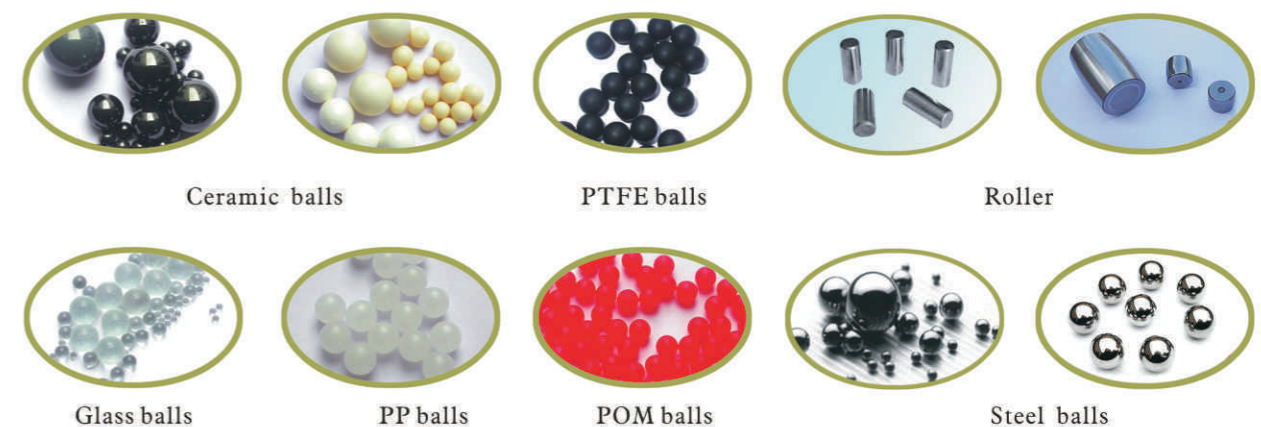


ST-UU/ST-UUB, ST/ST-B, LML, LME, LMEL, LM, LMF/LMK/LMH, LMEF/LMEK Series

Special Bearings



Balls & Rollers



Material	Si3N4,ZrO2,Al2O3, Sic, Glass,PP, POM, PTFE, Stainless Steel, Chrome Steel, Carbon Steel
Grade	G10,G16,G20,G28, G40,G60, G100, G200, G500, G1000